

Tank Inspection Checklist: Walk-around #2

Site



Near roll-up doors to wash bay. Protected by bollards.



Bollards worked but required repair. Cut weeds around bollards (in summer, will hide bollard).

Tank Condition



Tank is overall in good condition – some black growth on the tank that requires removal.

Damaged level meter – see below.

Signs & Labels



Tank identified by signage (EC) and K-Prin.

Fire Prevention

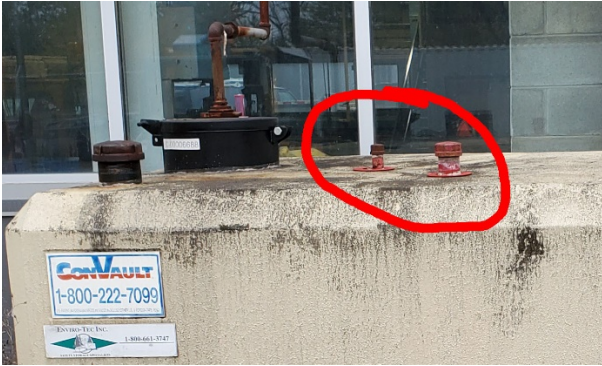
See site condition – area is clear of debris. Cut foliage. Park vehicles away from tank.

Leak Detection / Alarms



Level meter is readable and functional.

Leak Detection Dipstick



Tightly screwed on. Contact RPOps or B Env if required to open

Overfill Box



Box functional.



No garbage in box. Some oil on the bottom from removal.

Lines/Valves



Aboveground lines only. Waste oil comes in from building. Some surface rust – no apparent major damage. RPOps does annual corrosion testing.



Lines run from up from pump.



Collection from waste oil collection.



Oil also collected from filter press.

Grounding and Bonding

None visible. But is a oil tank and likely not required with a high flash point.

Secondary Containment

The tanks is double walled.

Dispensing Equipment

The tanks do not disburse.

Spill Kit



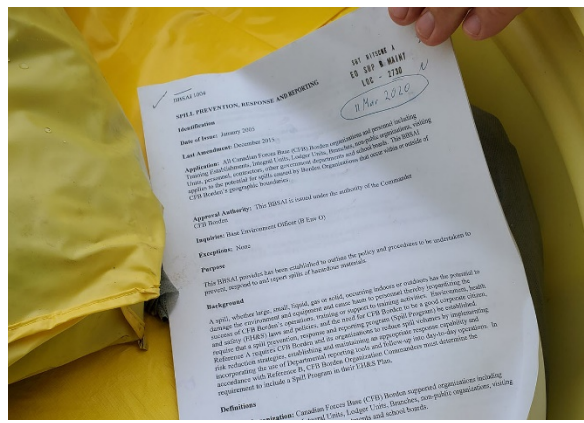
Spill kit is in the open. Could be covered or indoors (if accessible).



Various products including small universal kit.



Universal products in the kit.



Contains BBSAI 1004 – the Base plan. It is OK, but the EP is all that is needed (EP section below).

For the spill kit itself, an oil-only kit is needed (not universal). Universal will pick up all products but this is a waste oil tank and oil-only is more effective when raining, wet or in snow conditions. Recommend replacement of the kit (there are others indoors where contents may be more suitable).

Monitoring Sump

N/A

Site Specific STS EP



EP receptacle is present. Contains the plan.